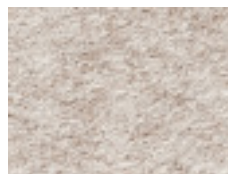




AD 272 marble



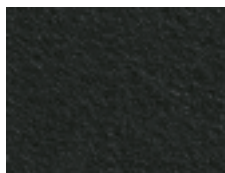
AD 263 quartz



AD 261 granite



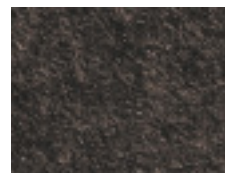
AD 273 greying



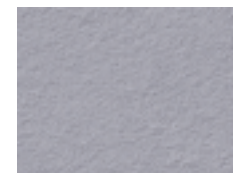
AD 283 black



AD 274 storm



AD 275 chocolate



AD 260 dust



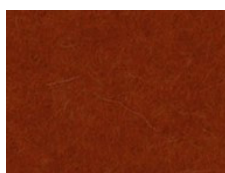
AD 292 masala



AD 293 leuchtgelb



AD 280 gold



AD 294 rost



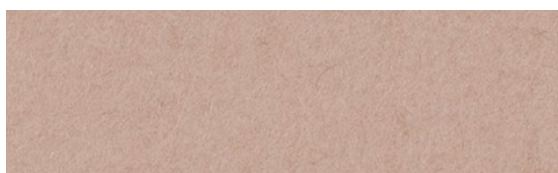
AD 271 fire



AD 281 cherry



AD 270 tomato



AD 295 blüte



AD 282 violett



2022



Farbkollektion  
Colour range  
Collection de couleur

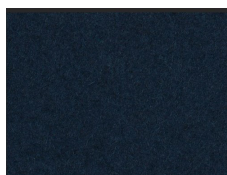
nur für Decampo Paneele einsetzbar  
can only be used for Decampo panels

peut être utilisée uniquement  
pour des panneaux Decampo

Die Größe der abgebildeten Stoffstrukturen entspricht nicht immer dem Originalstoff. Farbabweichungen sind aus drucktechnischen Gründen möglich.

The size of the materials structure shown does not always correspond to the original material. Due to the limitations of the printing process the materials and colours shown are not always a true copy of the original.

La dimension des structures de matériaux représentées ne correspond pas toujours aux matériaux d'origine. Pour des raisons techniques d'impression, des variations de teintes sont possibles.



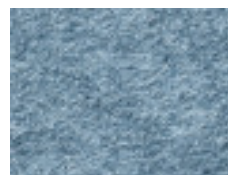
AD 296 blaubeere



AD 266 ink



AD 267 night



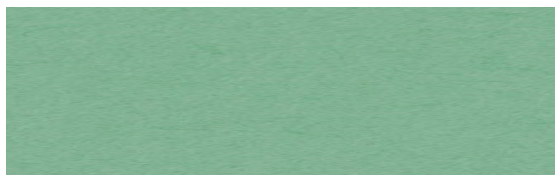
AD 265 jeans



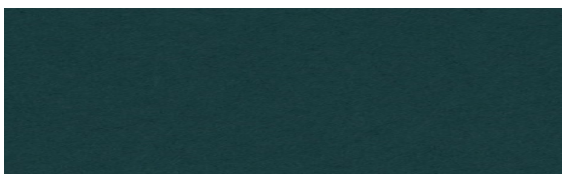
AD 276 ultramarine



AD 264 glacier



AD 297 arctic



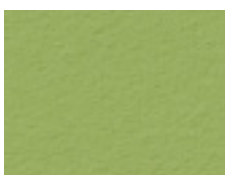
AD 300 blaugrün



AD 278 pine



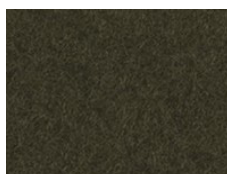
AD 269 jungle



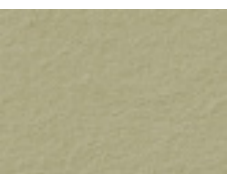
AD 268 avocado



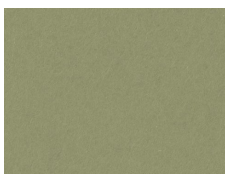
AD 279 green apple



AD 298 olivgrün



AD 262 camel



AD 299 salbeigrün



2022

Farbkollektion  
Colour range  
Collection de couleur

nur für Decampo Paneele einsetzbar  
can only be used for Decampo panels

peut être utilisée uniquement  
pour des panneaux Decampo



Die Größe der abgebildeten Stoffstrukturen entspricht nicht immer dem Originalstoff. Farbabweichungen sind aus drucktechnischen Gründen möglich.

The size of the materials structure shown does not always correspond to the original material. Due to the limitations of the printing process the materials and colours shown are not always a true copy of the original.

La dimension des structures de matériaux représentées ne correspond pas toujours aux matériaux d'origine. Pour des raisons techniques d'impression, des variations de teintes sont possibles.

**Technische Beschreibung,**

Materialzusammensetzung, Oberfläche Wollfilz 100% Wolle  
Brandschutz (DIN EN 4102-1 B2)

Kernmaterial Akustikvlies  
100% Polyester  
schwer entflammbar,  
(DIN EN 13501 - 1:2010)

Lichtechtheit 5 - 7 (in Abhängigkeit von Farbe)

Reinigung absaugen oder  
mit feuchtem Tuch abwischen

**Technical Specifications,**

Composition, felt surface 100% wool  
flammability (DIN EN 4102-1 B2)

core material  
100% polyester  
flame resistant,  
(DIN EN 13501 - 1:2010)

Colourfastness to light 5 - 7 (depending on colour)

Maintenance vacuuming or  
wipe clean with a damp cloth

**Description technique,**

Composition, feutre de laine en surface 100% Laine  
classement feu (DIN EN 4102-1 B2)

coeur  
100% polyester  
difficilement inflammable,  
(DIN EN 13501 - 1:2010)

Solidité à la lumière 5 - 7 (dépendant de la couleur)

Nettoyage passez l'aspirateur ou  
essuyez avec une étoffe humide

PREFORM GmbH  
Esbacher Weg 15  
D-91555 Feuchtwangen  
Tel.: + 49 98 52 90 70  
Fax: + 49 98 52 907-77  
info@preform.de  
www.preform.de