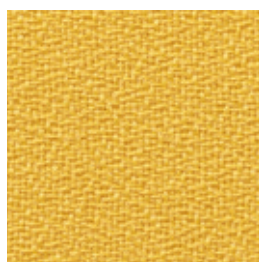


Stoffgruppe · Fabric · Tissu

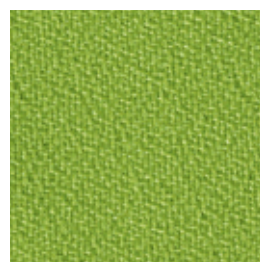
Die Größe der abgebildeten Stoffstrukturen entspricht nicht immer dem Originalstoff. Farbabweichungen sind aus drucktechnischen Gründen möglich.

The size of the materials structure shown does not always correspond to the original material. Due to the limitations of the printing process the materials and colours shown are not always a true copy of the original.

La dimension des structures de matériau représentées ne correspond pas toujours au matériau d'origine. Pour des raisons techniques d'impression, des variations de teintes sont possibles.



A 66 yellow



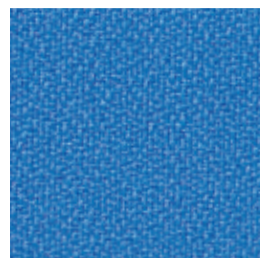
A 80 spring



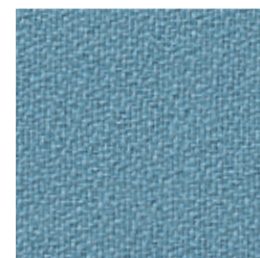
A 113 clear grey



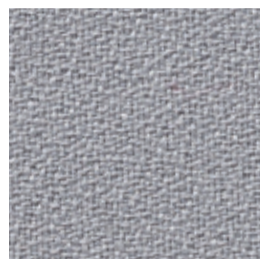
A 73 orange



A 70 cyan blue



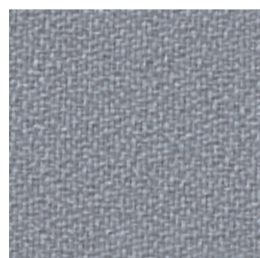
A 79 baltic sea



A 98 stone



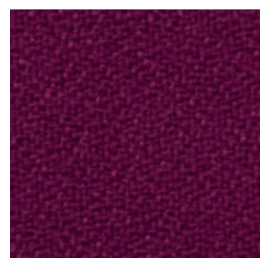
A 68 sky



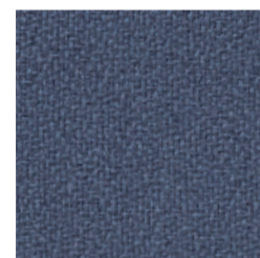
A 50 medium grey



A 52 silver



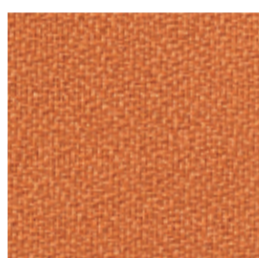
A 92 bordeaux



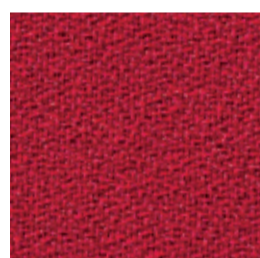
A 59 steel



A 114 cool grey



A 67 terracotta



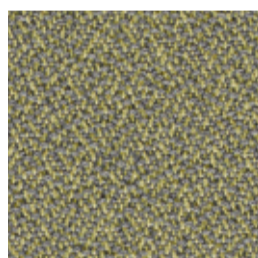
A 65 red



A 290 ultramarin



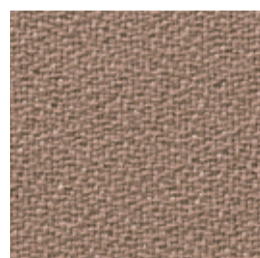
A 64 anthracite



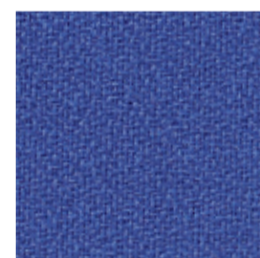
A 120 olive-grey



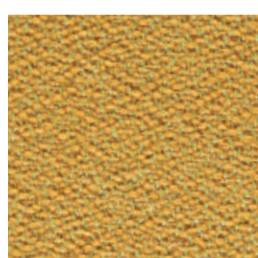
A 118 olive



A 101 nougat



A 56 daylight blue



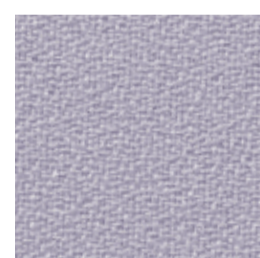
A 121 olive-honey



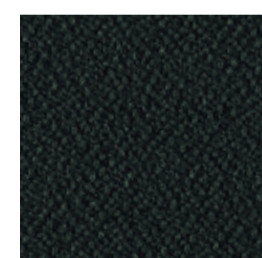
A 116 honey



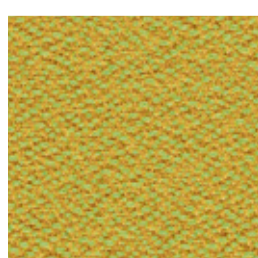
A 100 grit



A 115 lavender



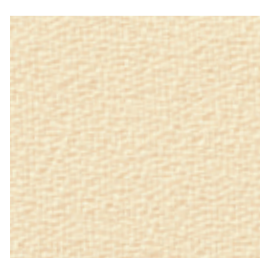
A 117 deep black



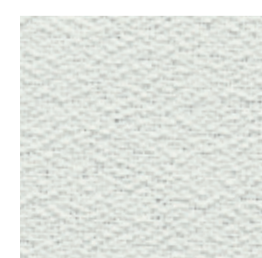
A 122 honey-spring



A 119 lemon



A 99 beach



A 112 white

Technische Beschreibung

Materialzusammensetzung 100 % Polyester Trevira CS
 Gewicht ca. 400 g/lfm.
 Breite 170 cm
 Brandschutz DIN 4102 B1, entspricht den Normen in Deutschland
 Scheuerfestigkeit 20.000 Touren nach Martindale
 Lichtechtheit 5 - 6
 Reinigung Mit einem feuchten Tuch abwischen.

Technical Specifications

Composition 100 % Polyester Trevira CS
 Weight Approx. 400 g/lfm.
 Width 170 cm
 Flammability DIN 4102 B1
 Abrasion resistance 20.000 rubs according to Martindale
 Colourfastness to light 5 - 6
 Maintenance Wipe clean with a damp cloth.

Description technique

Composition 100 % Polyester Trevira CS
 Poids ca. 400 g/lfm.
 Largeur 170 cm
 Classement feu M1
 Résistance à l'usure 20.000 mouvements selon Martindale
 Solidité à la lumière 5 - 6
 Nettoyage Essuyez avec une étoffe humide.

PREFORM GmbH
 Esbacher Weg 15
 D-91555 Feuchtwangen
 Tel.: + 49 98 52 90 70
 Fax: + 49 98 52 90 77
 info@preform.de
 www.preform.de